

# The Access Guide

Removing Barriers, Improving Access

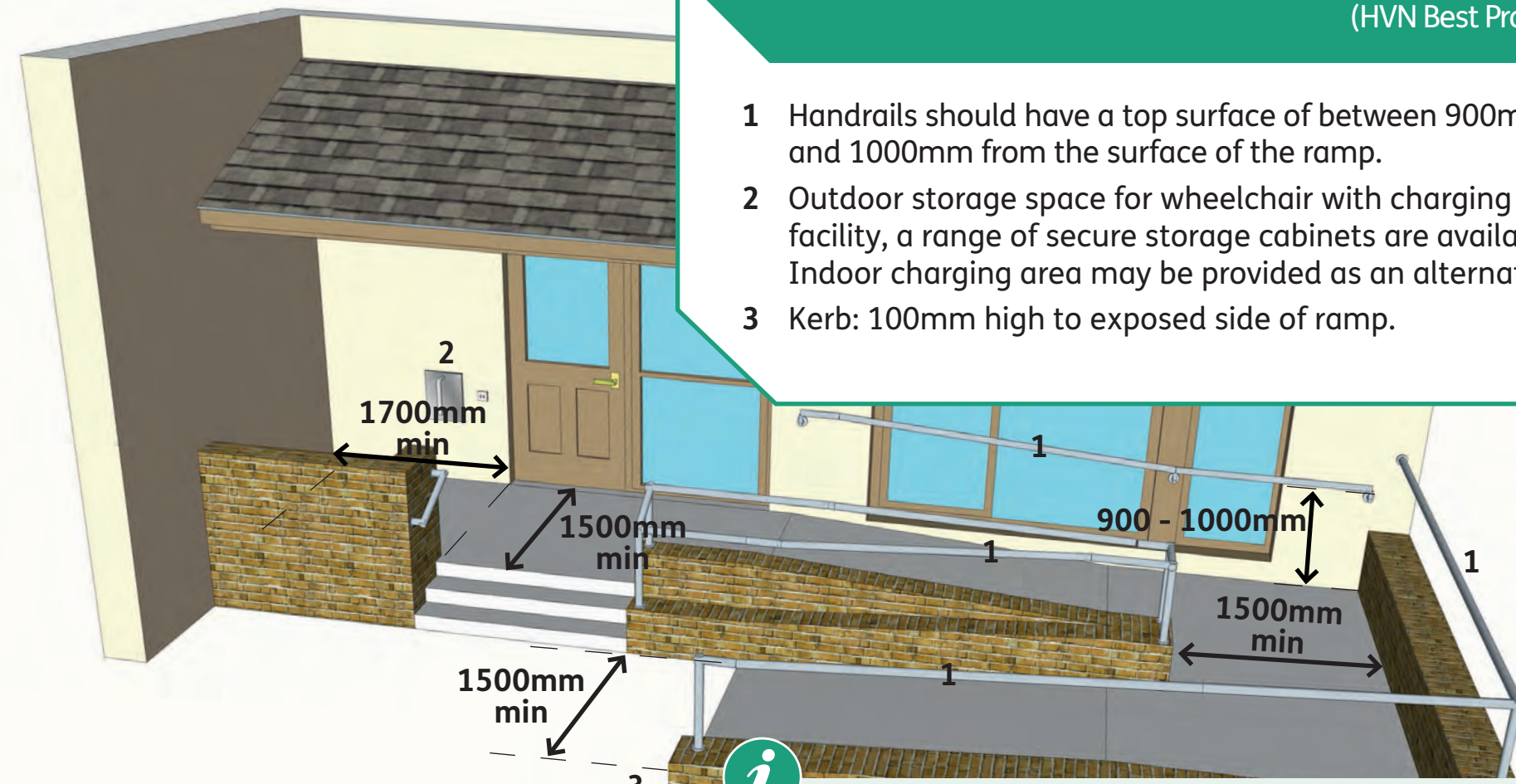
## Fully Wheelchair Accessible



### Front & Back Entrance

for residential buildings  
(HVN Best Practice)

- 1 Handrails should have a top surface of between 900mm and 1000mm from the surface of the ramp.
- 2 Outdoor storage space for wheelchair with charging facility, a range of secure storage cabinets are available. Indoor charging area may be provided as an alternative.
- 3 Kerb: 100mm high to exposed side of ramp.



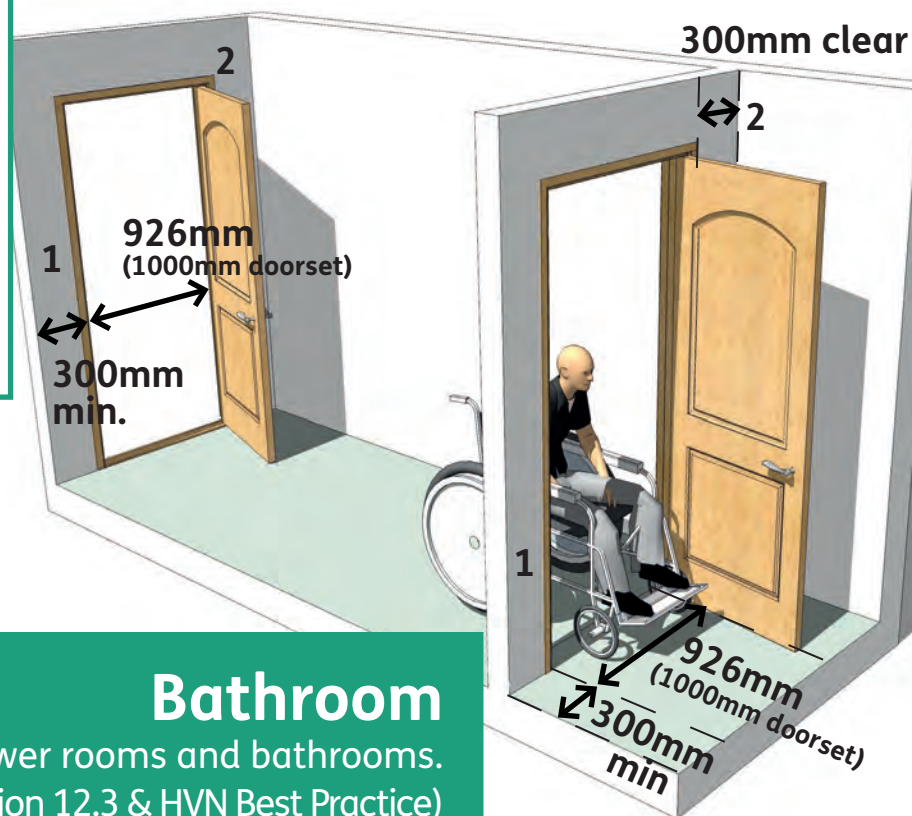
### Ramps and Steps

Upstand to contrast visually with the surface of the ramp.  
Non-slip treads and nosings on steps: a = 170mm (max) b = 280mm (min).  
For ramps 300mm or more rise, alternative stepped access required.  
Gradients: Ramps should have the lowest practical gradient within the range 1:20 to 1:12. 1 in 12 maximum, landings at 2 metres. 1 in 15 and less, landings at 5 metres. 1 in 20 preferred, landings at 10 metres.

### Doorways

Location and clearance for internal or external door. (BS 8300 Section 6.4.2 & HVN Best Practice)

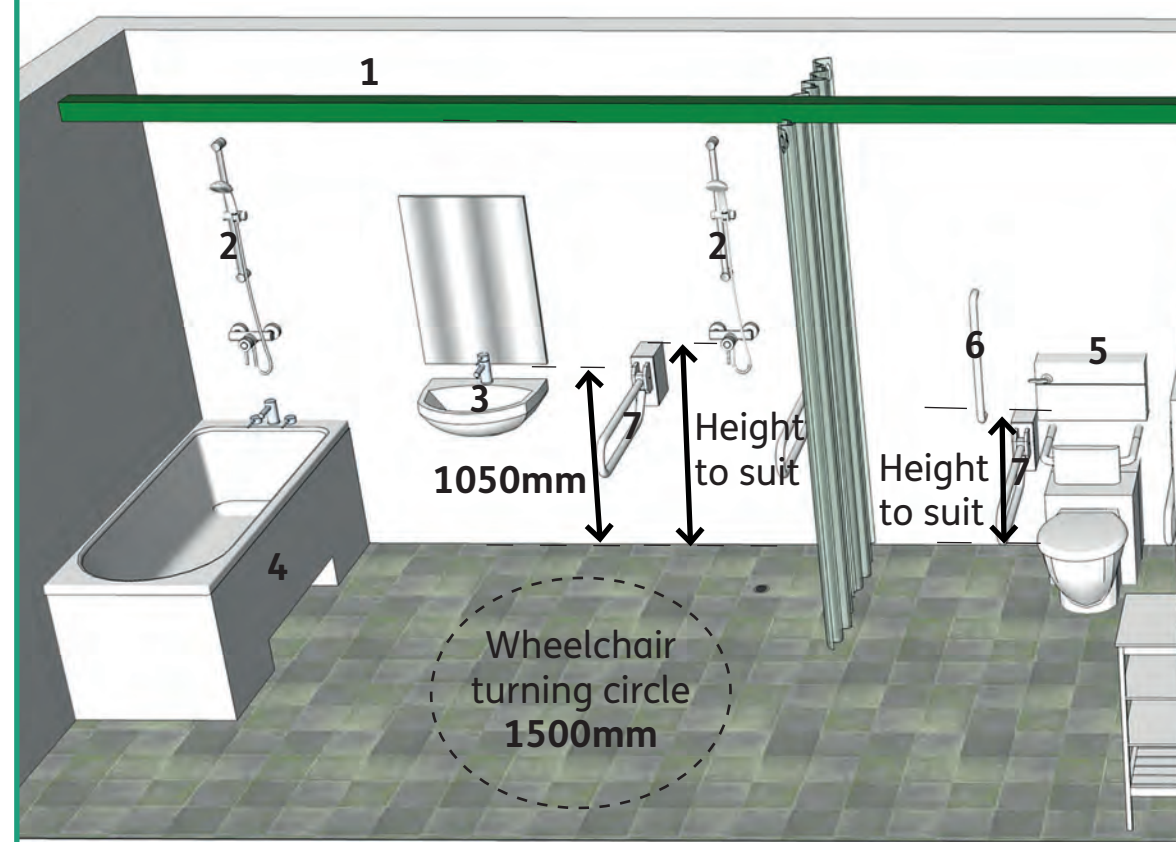
- 1 300mm could be reduced if door is opened by remote automatic control.
- 2 Door hung from corner of room.



### Bathroom

Shower rooms and bathrooms.  
(BS 8300:2009 Section 12.3 & HVN Best Practice)

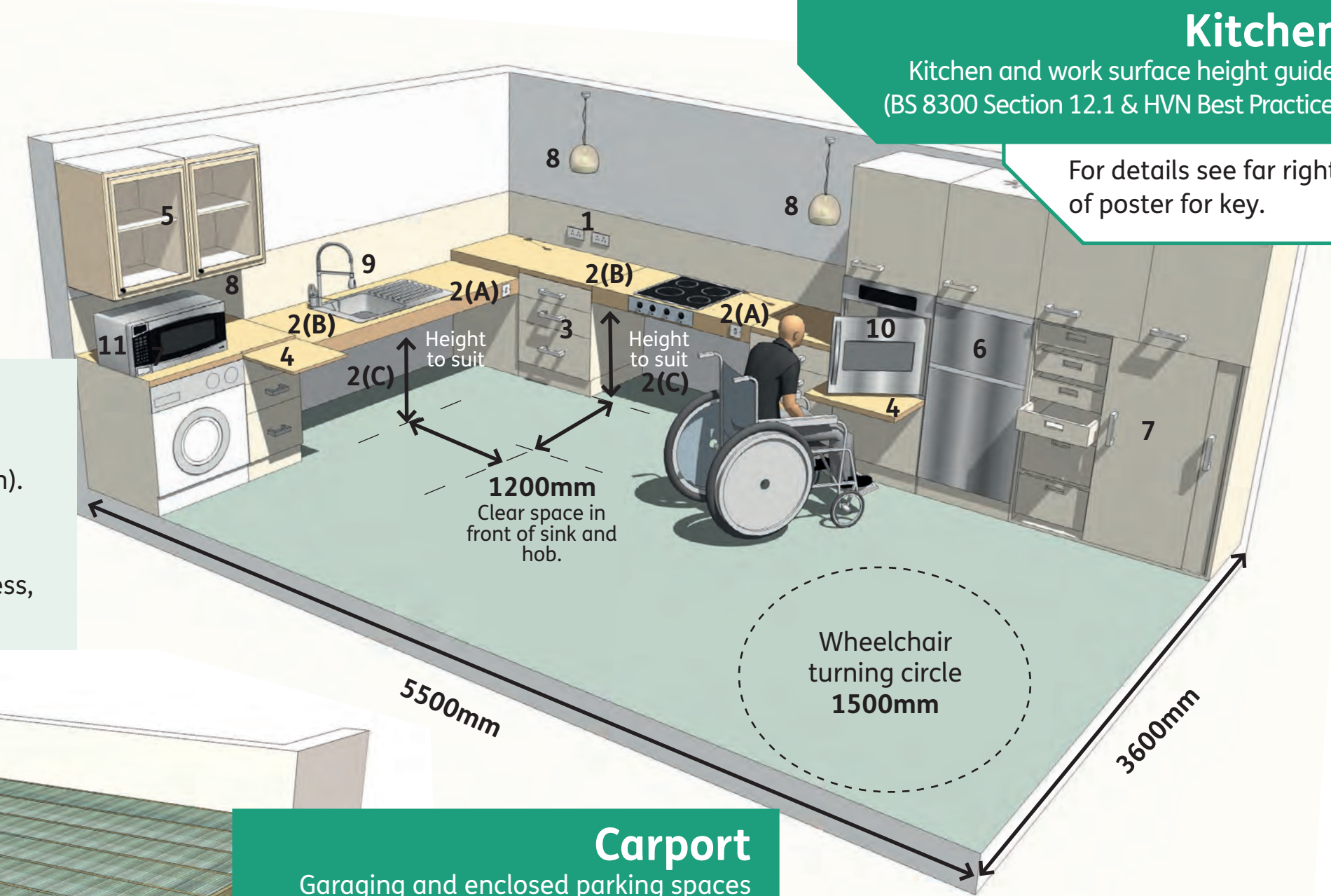
- 1 Provision for Track and Hoist between bathroom and bedroom.
- 2 Removable/adjustable shower height heads.
- 3 Lever tap and wall mounted sink
- 4 Deep recess for feet of movable hoist 150mm x 500mm.
- 5 Flat-topped close-coupled cistern providing a back rest and colostomy changing surface.
- 6 Grab rails should be positioned to meet the particular needs of the user. Guidance suggests that grab rails should be 32 - 35mm diameter and 50 - 60mm clearance between bar and wall. Vertical grab rails should be 500 - 700mm apart and 800 - 1400mm above floor level.
- 7 Horizontal grab rails should be positioned to meet the particular needs of the user. Guidance suggests that grab rails should be 600mm wide and 680mm above floor level.



Bathroom overall size: 4900mm wide x 2600mm deep.



For more information:  
[www.Home2fit.org.uk](http://www.Home2fit.org.uk)



### Kitchen

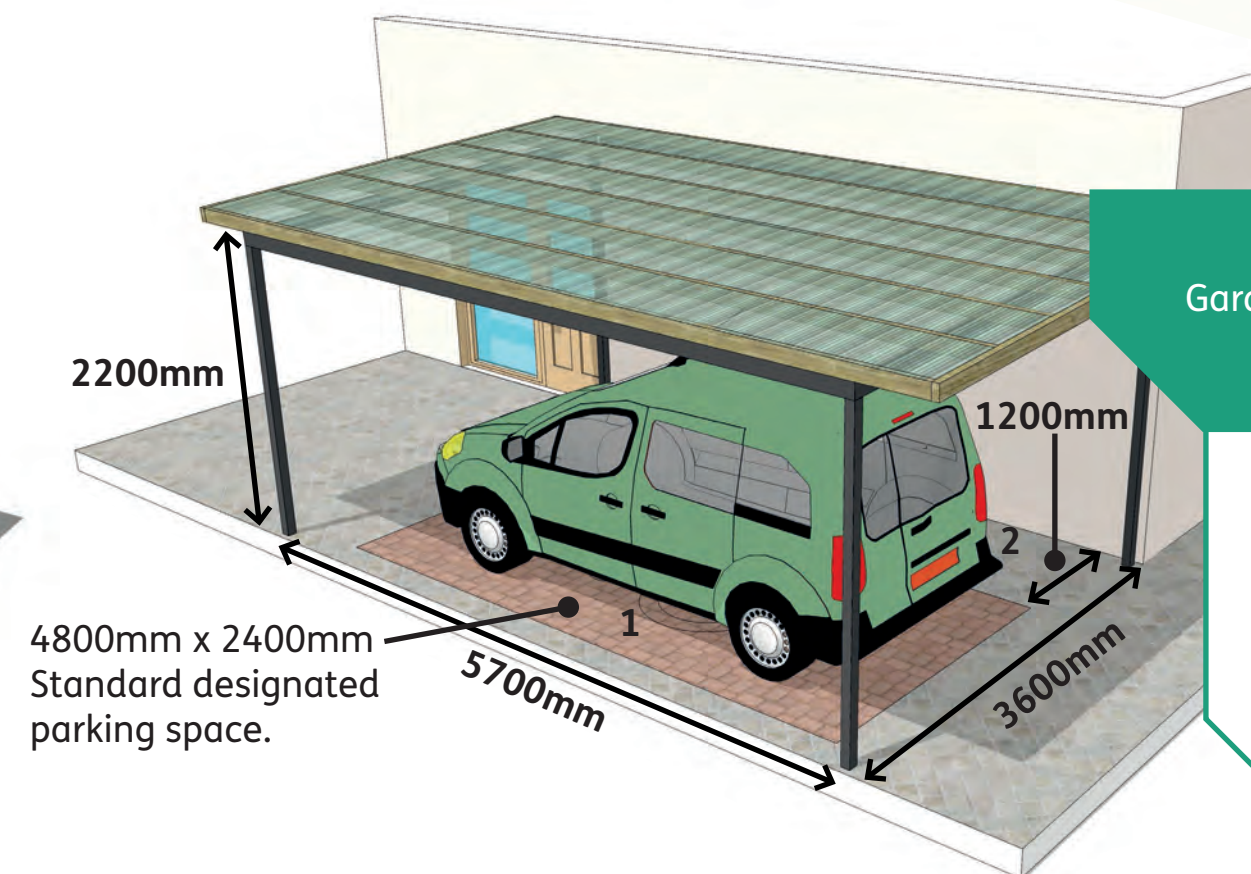
Kitchen and work surface height guide.  
(BS 8300 Section 12.1 & HVN Best Practice)

For details see far right of poster for key.

### Carport

Garaging and enclosed parking spaces  
(BS 8300:2009 Section 4.3 & HVN Best Practice)

- 1 4800mm x 2400mm Standard designated parking space.
- 2 Access strip of 1200mm to allow disabled people to get into/ out of car under cover.



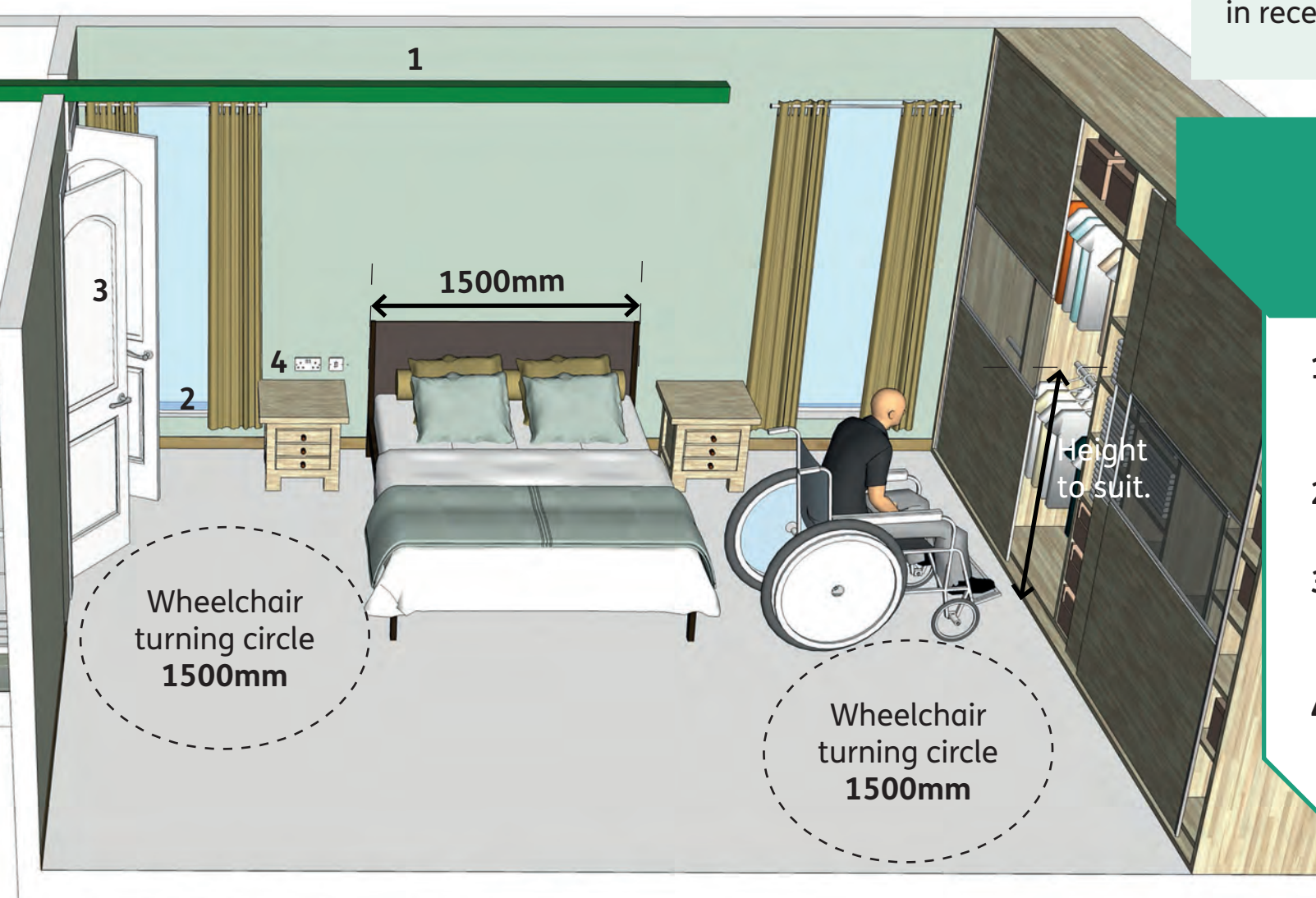
### Surfaces

Avoid glare from ceilings, walls and floors. Avoid deep pile carpets. Avoid confusing patterns. All floor finishes should be non-slip. Avoid unexpected changes of level. Use lighting, colours and texture to warn of low ceilings and changes in level. Avoid wall projections. Where possible, provide site radiators in recesses and/or covers as protection.

### Bedroom

Accessible bedrooms.  
(BS 8300:2009 Section 12.8 & HVN Best Practice)

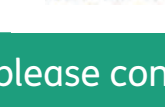
- 1 Provision for Track and Hoist between bedroom and bathroom.
- 2 Sill height maximum 600mm.
- 3 Double door with knockout panel above. 1200mm wide.
- 4 Sockets should be 400mm above floor, 350mm from corners.



Bedroom overall size: 5500mm wide x 4000mm deep.

### Kitchen

- 1 Socket 150mm above work surface.
- 2 Adjustable height work surfaces:  
**(A) Switch** - to raise or lower electrically adjustable worktop to ensure safe /comfortable use of cooker or sink.  
**(B) Height** - 760mm minimum height of work surface specifically for wheelchair users. A work surface should not be more than 600mm deep to allow wheelchair users to access the preparation area and to reach the back wall.  
**(C) Knee recess** - 700mm minimum clear height from floor to the underside of work surface. Where a knee recess is provided under a hob, its underside should be insulated to avoid harm to a person who has little or no feeling in their legs.
- 3 Cabinet with deep pan drawers.
- 4 Pull-out board above floor mounted cupboard unit. Circular cut-out optional.
- 5 1625mm max. height reachable by ambulant disabled people.
- 6 Fridge Freezer. 1150mm max. shelf height to allow reach from wheelchair.
- 7 Cupboards with sliding doors that contain pull-out shelves.
- 8 Task lighting from ceiling and under cabinet.
- 9 Lever tap.
- 10 Controls for an oven and grill intended for use by wheelchair users should be no higher than 1050mm and no lower than 700mm from the floor, with display panels no higher than 1200mm from the floor.
- 11 Microwave ovens should either be located on a work surface or mounted so that the base of the oven is no higher than 850mm from the floor and its controls no higher than 1150mm from the floor.



For further information please contact Grant Carson ([grant@gcil.org.uk](mailto:grant@gcil.org.uk))